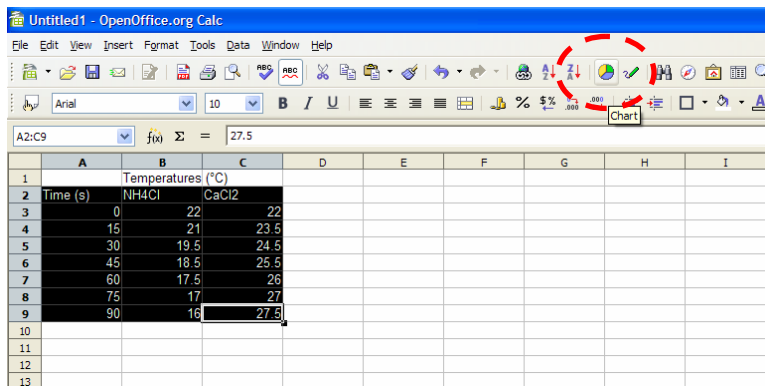


Open Office Calc Tutorial

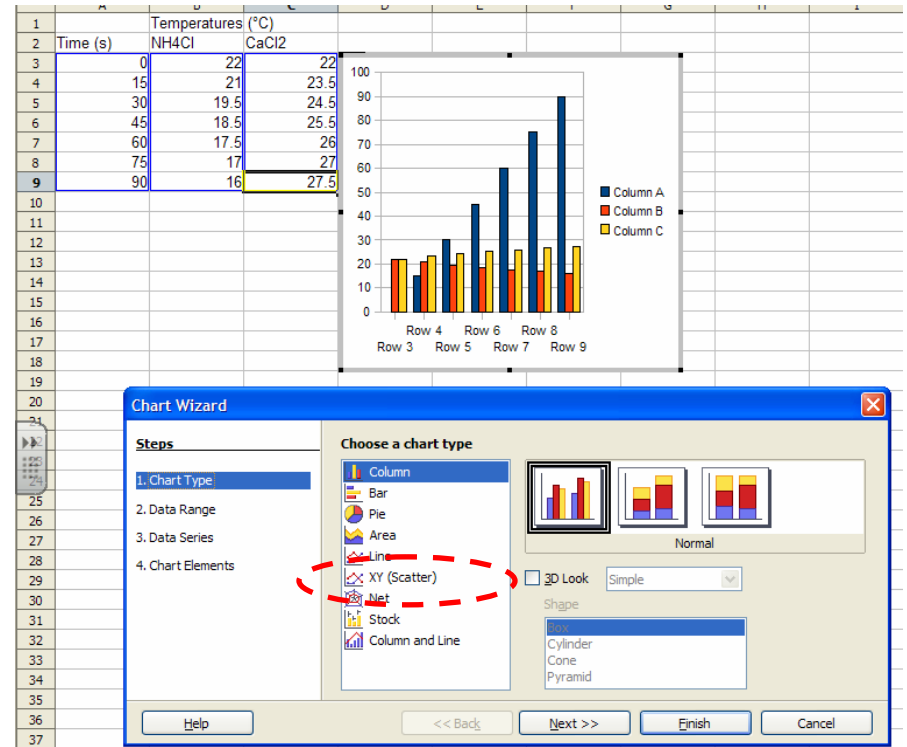
Step 1: Enter your data into columns, with the data to be placed on the horizontal axis in the first column.

	A	B	C	D
1		Temperatures (°C)		
2	Time (s)	NH4Cl	CaCl2	
3	0	22	22	
4	15	21	23.5	
5	30	19.5	24.5	
6	45	18.5	25.5	
7	60	17.5	26	
8	75	17	27	
9	90	16	27.5	

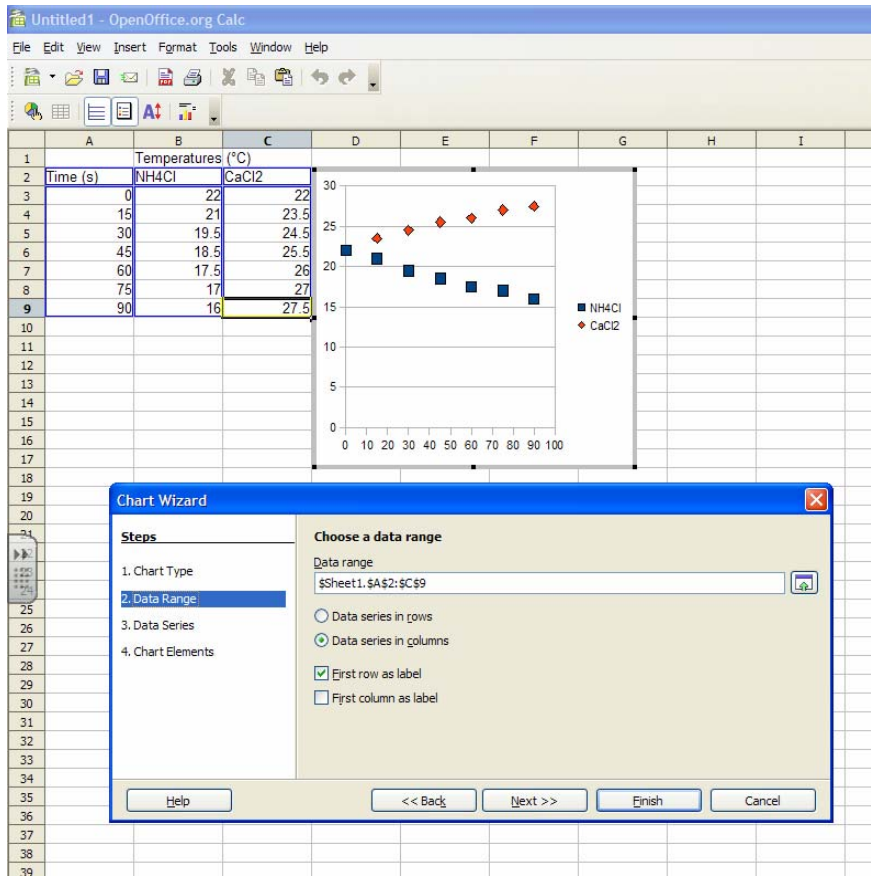
Step 2: Highlight the first set of data to plot, including the column headings. Click on the Chart Button.



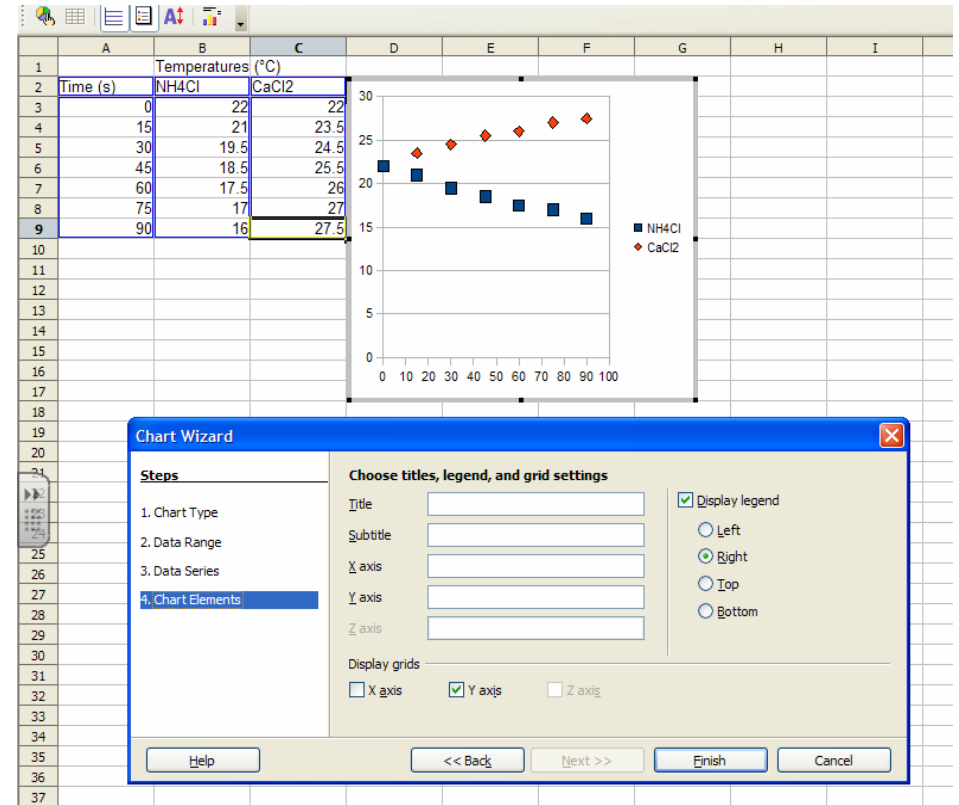
...And here's what happens:



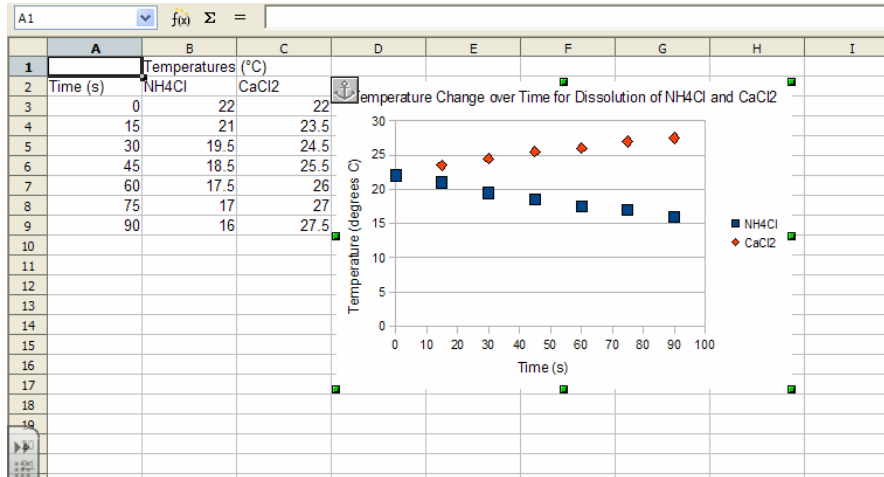
Step 3: Select XY Scatter from the Chart Types menu (see above), then click on "2. Data Range" under the Steps menu on the left. Make sure that the "First Row as Labels" option is selected (see below).



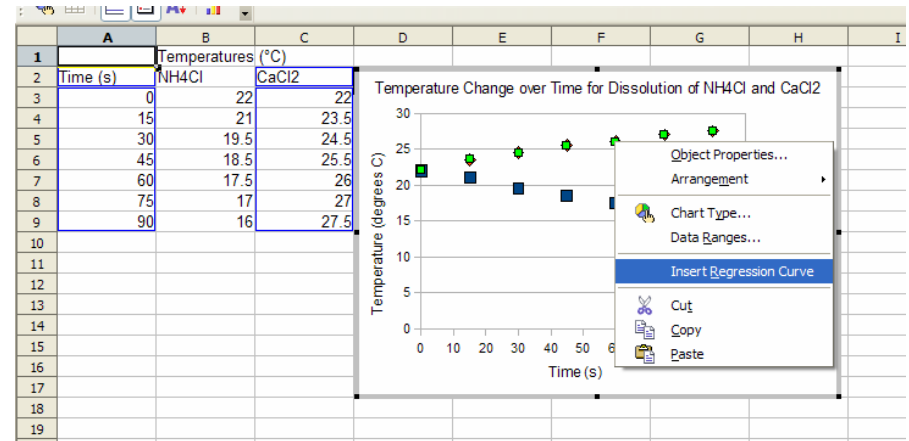
Step 4: Click on "4. Chart Elements" under the Steps menu on the left. Enter the chart title and x-axis and y-axis labels in the appropriate boxes. Then click Finish.



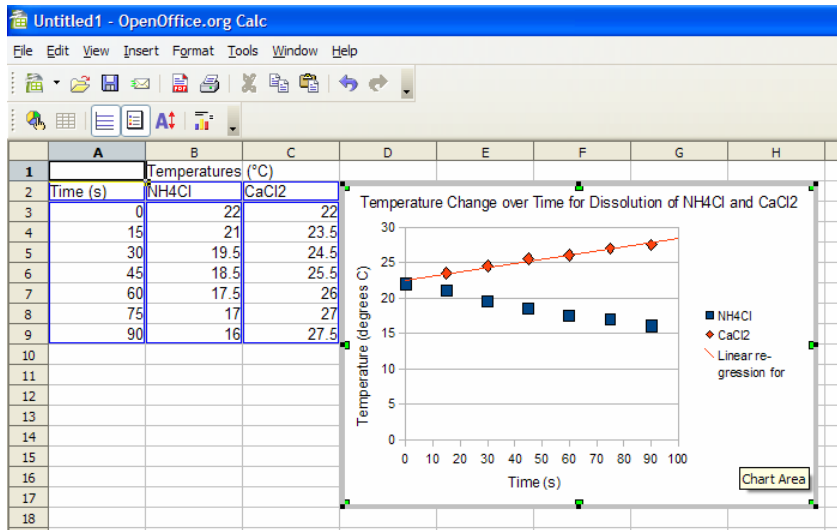
...And here's what it should look like now:



Step 5: To add a trendline, double click on the chart itself, then right-click on the data you want to fit and select "Insert Regression Curve."

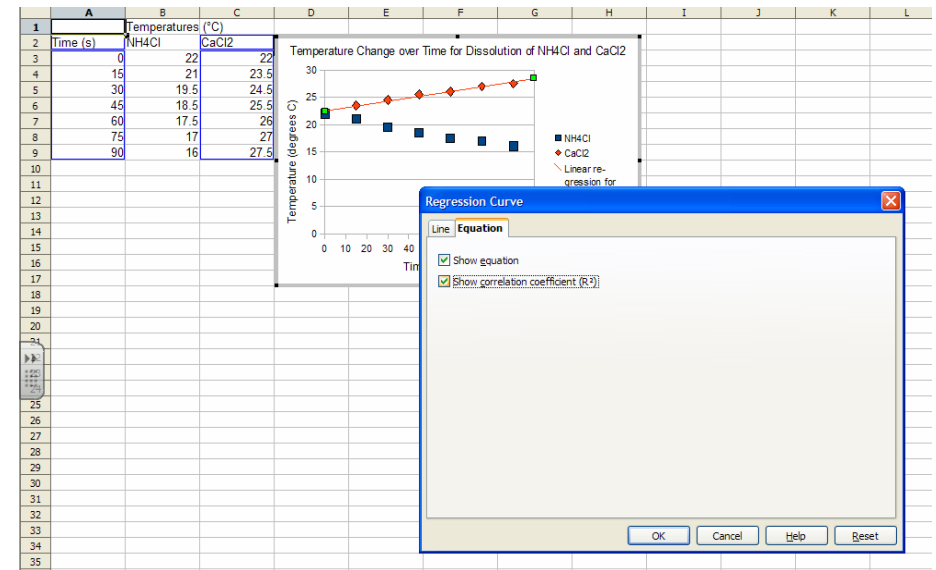


...And this is what it should look like.

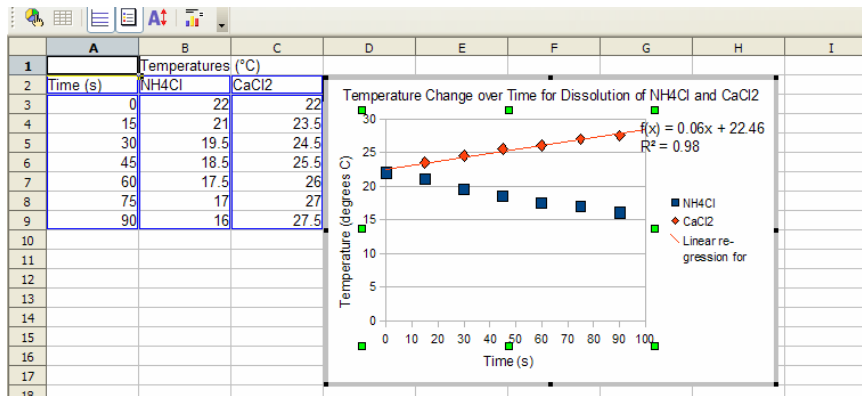


Step 6: Show the equation for the trendline. Double-click on the fit line to open the Regression curve menu (see below). Click on the "Equation" tab. Select "Show equation" and "Show correlation coefficient (R^2)."

Then click "OK."



...And here's what it looks like:



Repeat the fitting steps for the other set of data. Move the equations around as necessary to make them visible. You can select the chart, copy it (Control-C) and paste it into your word document, just like I have done below.

